



**Lotus Notes Integration**

**With**

**CaseWare Working Papers**

**By Revisor Informatik & NextUs**

## 1. Features

With this feature you will be able to:

Retrieve the ReplicateID and the DocumentID from a Lotus Notes Database, and write this to cells in CaseView, or

Retrieve the name of databasefile and the documentID from a Lotus Notes Database, and write this to cells in CaseView.

Open a specific Lotus Notes Document within CaseView and optionally jump to a specific Anchor.

Open a specific Lotus Notes Document from CaseWare Indexmanager.

The Lotus Notes Integration with CaseWare Working Papers consists of following modules:

A Visual Basic DLL, which is called from

A CaseView script or

A helperapplication (LaunchNotes), to be called from the Indexmanager.

An example CaseWare file

## 2. Installation

Insert the CD and install the components.

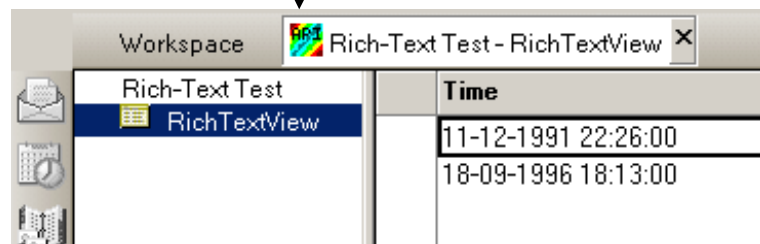
## 3. Retrieve the ReplicateID and the DocumentID

Open the CaseWare file named Lotus Note.

Open Lotus Notes Setup from the Indexmanager.

Select a document in a Lotus Notes view and click	ReplicaID	DocID	ViewID	Filename	Anchor	Click to open document by ReplicaID	Click to open document by databasefilename	Parameters to open document by ReplicaID	Parameters to open document by filename	Parameterstring to Document Manager
Get Doc	85255E1800 6C664A	8FB55518B F6052885255 F6500827B6 A	85255CDA00 718D998525 9E3E009505 5B	j:\lotus\notes data\richtext. not	ch	Open doc Repld	Open doc filename	85255E1800 6C664A@BF 8555518BF6 052885255F6 500827B6A. @ch	j:\lotus\notes\ data\richtext.n s@BF8555518 BF605288525 5F6500827B6 A@ch	85255E1800C 66AA2BF855551 BF605288525F 6500827B6A@ch

Open Lotus Notes and the desired Database. Locate the cursor on the desired Document in the View.



Click on GetDoc to retrieve the ReplicaID, DocID, ViewID and Filename

Input if necessary an Anchor

#### 4. Open the Document using the ReplicateID, DocumentID and Anchor

The button 'Open doc ReplID' contains following event:

Execute script

Scriptname

Function

And takes following Parameters:

Automatisk kalkulationsindtastning

Aktion: Udfør script

Scriptnavn: "LotusNotes"

Funktionsnavn: "opendoclink"

Parameter 1: rc(-5)

Parameter 2: rc(-4)

Parameter 3: rc(-1)

Meddelelse:

Select a document in a Lotus Notes view and click	ReplicaID	DocID	ViewID	Filename	Anchor	Click to open document by ReplicaID	Click to open document by databasefilename	Parameters to open document by ReplicaID	Parameters to open document by filename	Parameterstring to Document Manager
Get Doc	85255E1000 9C664A	BF655518B F6052895255 F6500827B6 A	85255CDA00 718D698525 9B3E008505 9B	:\lotus\notes\database\richtext.nsf	ch	Open doc Repld	Open doc filename	85255E1000 9C664A@BF 655518BF6 05288259F6 900827B6A @ch	:\lotus\notes\database\richtext.nsf@BF655518 BF605289525 5F6500827B6 A@ch	MIS255E1000C 664A@BF65551 8BF605289525F 6500827B6A@ch

The Lotus Notes Document opens, and jumps to the Anchor if inputted. (Use TAB + ALT to shift the Focus to Lotus Notes)

#### 5. Open the Document using the Filename, DocumentID and Anchor

The button 'Open doc filename' contains following event:

Execute script

Scriptname

Function

And takes following Parameters:

Automatisk kalkulationsindtastning

Aktion: Udfør script

Scriptnavn: "LotusNotes"

Funktionsnavn: "opendoclinkFile"

Parameter 1: rc(-3)

Parameter 2: rc(-5)

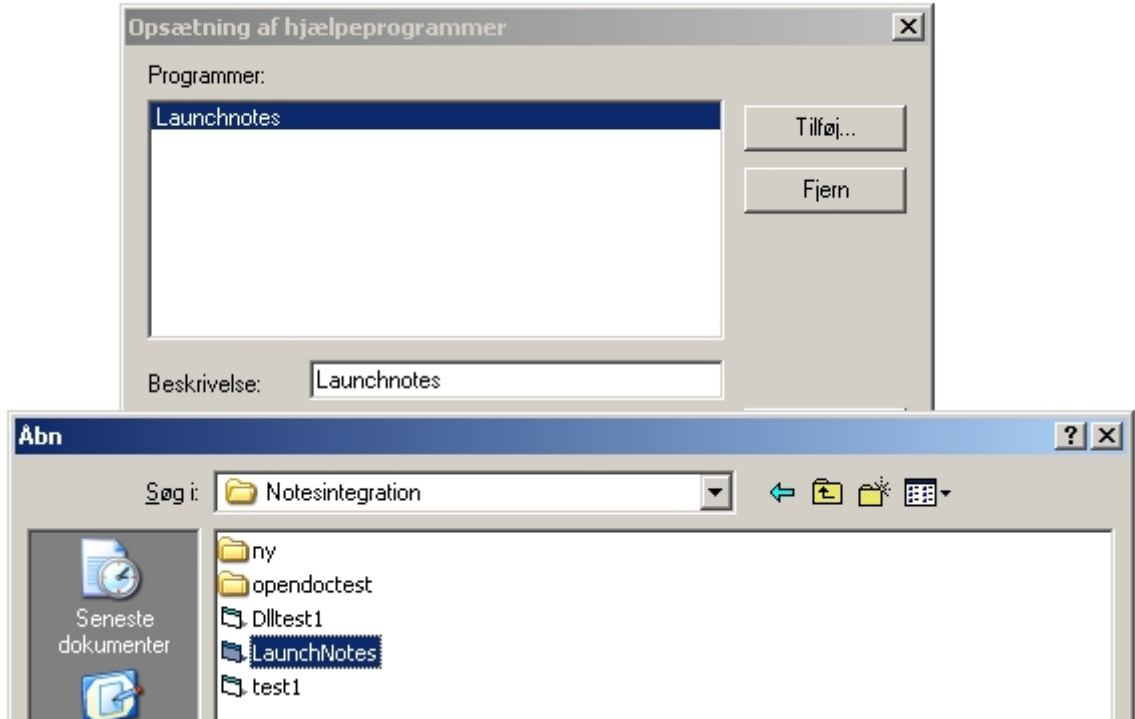
Parameter 3: rc(-2)

Meddelelse:

Select a document in a Lotus Notes view and click	ReplicaID	DocID	ViewID	Filename	Anchor	Click to open document by ReplicaID	Click to open document by databasefilename	Parameters to open document by ReplicaID	Parameters to open document by filename	Parameterstring to Document Manager
Get Doc	85255E1000 9C664A	BF655518B F6052895255 F6500827B6 A	85255CDA00 718D698525 9B3E008505 9B	:\lotus\notes\database\richtext.nsf	ch	Open doc Repld	Open doc filename	85255E1000 9C664A@BF 655518BF6 05288259F6 900827B6A @ch	:\lotus\notes\database\richtext.nsf@BF655518 BF605289525 5F6500827B6 A@ch	MIS255E1000C 664A@BF65551 8BF605289525F 6500827B6A@ch

## 6. Open the Document from the CaseWare Indexmanager

In order to launch a Lotus Notes Document from the Indexmanager, create a Helperapplication to the Program Launchnotes (in the CaseWare Program Folder):



Then setup the parameters for the program:

Program:

Filnavn:

Kør:

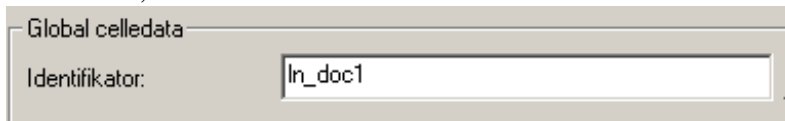
\*W\85255E18006C664A@BFB555518BF6052885255F6500827B6A@ch\*

DocID	ViewID	Filename	Anchor	Click to open document by Replicat	Click to open document by databasefilename	Parameters to open document by Replicat	Parameters to open document by filename	Parameterstring to Document Manager
BFB555518B F6052885255 F6500827B6 A2.C2 AM	85255CDA00 718D568525 583E0065D5	c:\lotus\notes\ data\vichted. rst	A2.F2	Open doc Repld	Open doc filename	85255E1800 6C664A@BF B555518BF6 052885255F 6500827B6A A2.C2 @ch	c:\lotus\notes\ data\vichtext.ms BFB555518 BF605288525 5F6500827B6 A@ch	85255E18006C 664A@BFB55551 8BF6052885255F 6500827B6A@ch

Copy and paste without quotations.

## 7. Using the CV-database to handle parameters

The cell in the Setup-document, that contains the parameter string for the Lotus Notes Document, can be stores in the external database:



Global celledata

Identifikator:

From the Indexmanager in CaseWare, open the document Lotus Example. The cell A1.B1 contains the link() to ln\_doc1

Open document by ReplicaID¶

A1.A1 OpenDoc¶	85255E18006C664A@BFB555518BF605288525 A1.B1 5F6500827B6A@ch¶
-------------------	--

## 8. Support and questions

For further information's please contact:

Carl-Helge Juul Petersen  
Revisor Informatik ApS  
Østergade 6  
DK-3600 Frederikssund  
Denmark  
Phone: +45 47 38 44 84  
Mail: post@revisorinformatik.dk